

SMS Software Manual for Digital Video Recorders



Table Of Contents

Initial Setup	3-4
Live Viewer Program	5
Overview	5
Basic Operation	6
Advanced Controls	7
Search Viewer Program	8
Initial Connection	8
Overview	9
Advanced Controls	10
Saving Footage	11
Locating Footage	12
DVR Player Program	13
Overview	13
Advanced Controls	14
Saving and Locating AVI Clips	15
SMS Program	16
Status Overview	16
eMap Overview & Operation	17
Configuration Overview & Operation	18-19
Backup	20
Direct Overview & Operation	20
Event Overview & Operation	21
Schedule Overview & Operation	22
CD Overview & Operation	23

System Requirements

Operating System: Windows 2000 - Windows 7

RAM: At Least 2GB of RAM

CPU: Single Core 3 GHz or higher
Dual Core 1.6 GHz or higher

Connection: T1 Line or better

Initial Setup

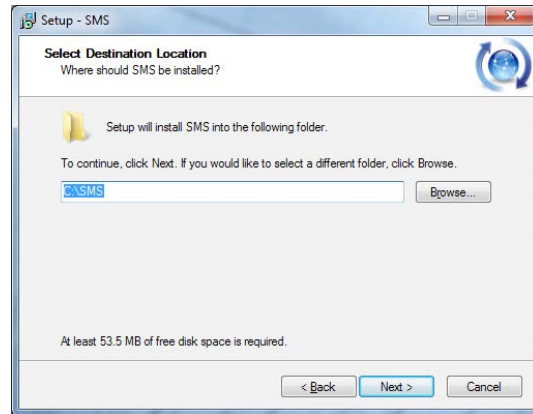
Install the Software:

Insert the SMS Software install disk that was included with your DVR. Click on the SMS Icon to begin setup.

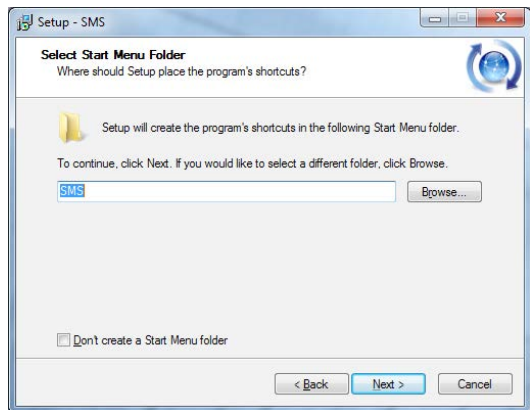
1. Click "Next" on the initial SMS Setup Wizard screen.



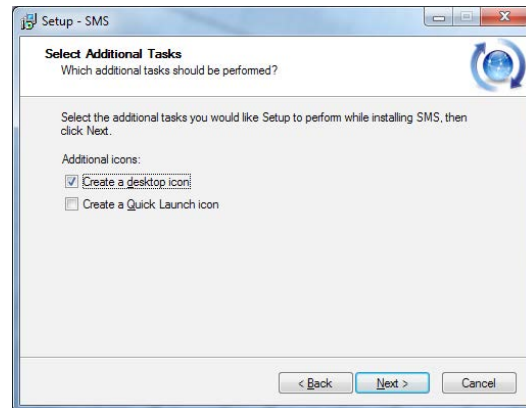
2. Select the install destination for your SMS program. The default path is typically recommended. Click "Next" to proceed.



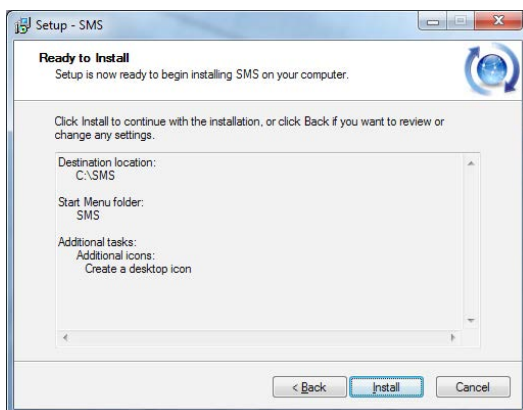
3. Select the destination for your shortcuts. The default path is typically recommended. Click "Next" to proceed.



4. You can additionally create a desktop or quick launch icon to quickly access your SMS software. Click "Next" to proceed.



5. An overview of the setup will show. Click "Install" to complete the installation.



6. You can launch the various viewers automatically upon completion of the setup. Click "Finish" to exit the setup.



Initial Setup

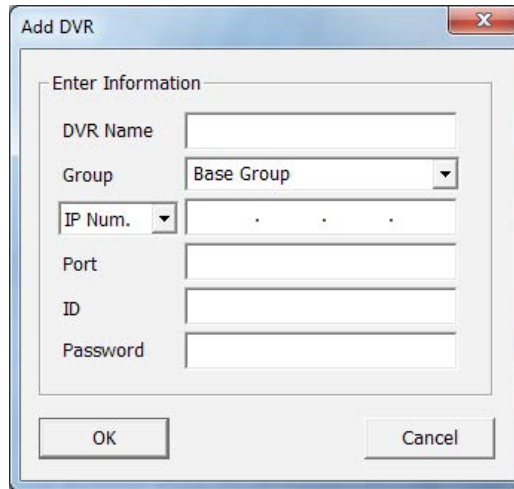
The following processes apply to all SMS-related programs. First open one of the installed programs, and follow the steps below to setup.

Adding a DVR

In the Setup Panel, Right-Click on "Base Group" to bring up the secondary menu. Left-Click on "Add DVR" to bring up the new DVR setup menu. This process is the same for all SMS programs.

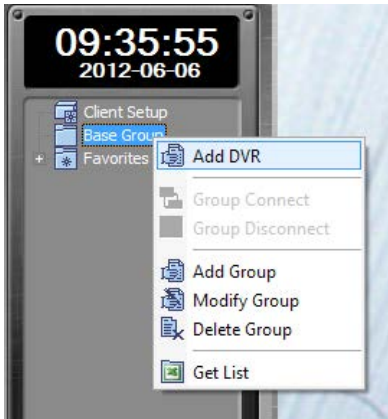
You can add multiple DVRs to the program. Operation may be slowed when connecting to multiple DVRs.

Create a DVR Name, and Input your DVRs IP address and port. Default ID is "remote", default password is "1111", default port is "7000". Click "OK" to complete.



Choose any name for your DVR (it does not have to match the name set on DVR)

Default Port: 7000
Default ID: remote
Default Password: 1111

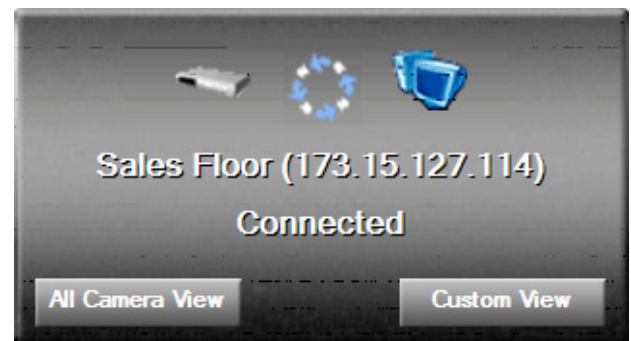
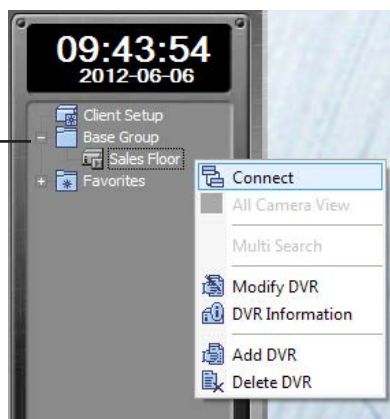


Connecting to DVR

In the Setup Panel, click on the + button next to the "Base Group" to drop down the DVR selections. Double-click, or Right-Click on the DVR to bring up the secondary menu. Left-Click on "Connect" to connect to the DVR and bring it up in the Live Viewer.

Select "All Camera View" to bring up all cameras in order that they are connected to your DVR. Select "Custom View" to place individual cameras into the viewer window. **Note: you can always swap, move, add, or delete cameras regardless if you select All Camera View, or Custom View.**

Click "+" to open selections drop down.



Live Viewer Overview



SCREEN AREA LEGEND

1. Camera Name (Can be Changed on DVR)
2. Playback Date & Time (This time will freeze if playback is slowed due to bandwidth)
3. Currently Selected Camera Window(s) (Blue Border)
4. DVR Name
5. Version Number
6. Search Viewer Screen Toggle
7. SMS Screen Toggle
8. Window Minimize & Program Close (this will automatically log out of the dvr)
9. Program Name
10. Current Time & Date (Pulled from computer)
11. Configuration/Setup Panel
12. Camera Window Configuration Controls
13. Additional Control Panel (Adjust, PTZ, Alarm, Audio)
14. Audio, Record, Stop Controls (Audio Controls only available on select models)
15. Latest Motion Events

Basic Operation



Before connecting to a DVR make sure the blue frame box is placed on the first available blank window.

If you have connected to a DVR and don't see your cameras, they may have been placed in windows not currently being shown. Click the 64 button to show all windows.

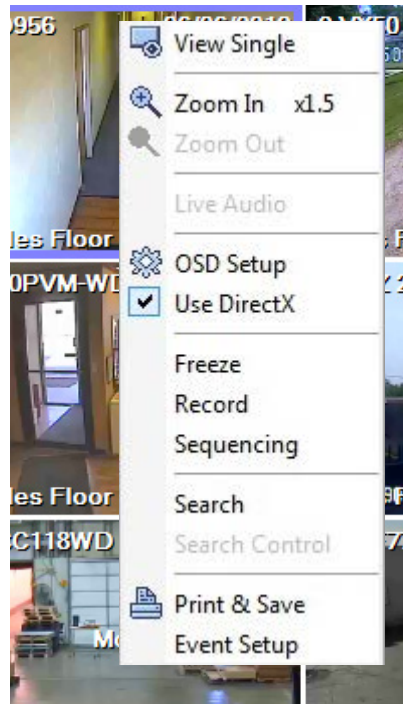


To move individual windows, drag-and-drop them to the desired position. To reposition all windows, disconnect from the DVR, select the desired starting frame, and reconnect to the DVR.

You can connect to multiple DVRs simultaneously, however doing so may slow the operation of the software.



Right click within a camera window to pull up menu.




Enabling DirectX will make viewing quicker, however it may slow bandwidth resulting in lag or skipping. If you experience lag, deselect "Use DirectX".

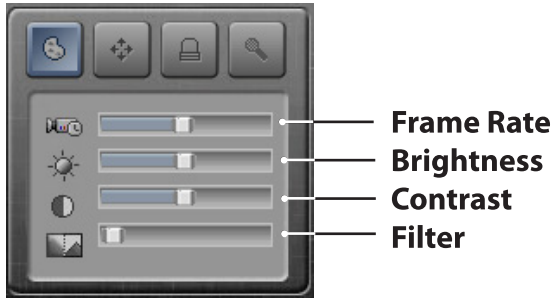
The bottom panel will display a list of the latest events, with the latest event displayed at the top of the list.


DVR Name	Event	Time
Sales Floor	Motion Event - Channel 15 - Camera VF540	2012-06-06 09:49:54
Sales Floor	Motion Event - Channel 06 - Camera PTZ 26X	2012-06-06 09:49:51
Sales Floor	Motion Event - Channel 07 - Camera D985	2012-06-06 09:49:50
Sales Floor	Motion Event - Channel 13 - Camera CC115	2012-06-06 09:49:47
Sales Floor	Motion Event - Channel 15 - Camera VF540	2012-06-06 09:49:45

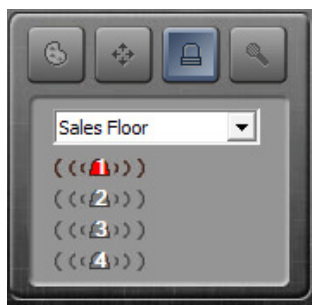
Live Viewer - Advanced Controls


The advanced controls can be accessed by selecting the corresponding button in the lower right corner of the Live Viewer screen.

 **Adjust** -When the adjust button is selected, you can change the parameters for each camera individually such as frame rate, brightness, contrast, and filter. **NOTE:** This does not change the DVR settings, only how the picture appears when viewed in the software.




 **Alarm** -When the alarm button is selected, the currently connected DVR name(s) will automatically be imputed into the drop down box. Click on the Numbers to enable (red) or disable (grey) each alarm.



 **Audio** -When the audio button is selected, you can use a microphone connected to your computer to transmit audio to the audio out channel on your DVR. Select the DVR from the drop down box, and click on the microphone button to connect.

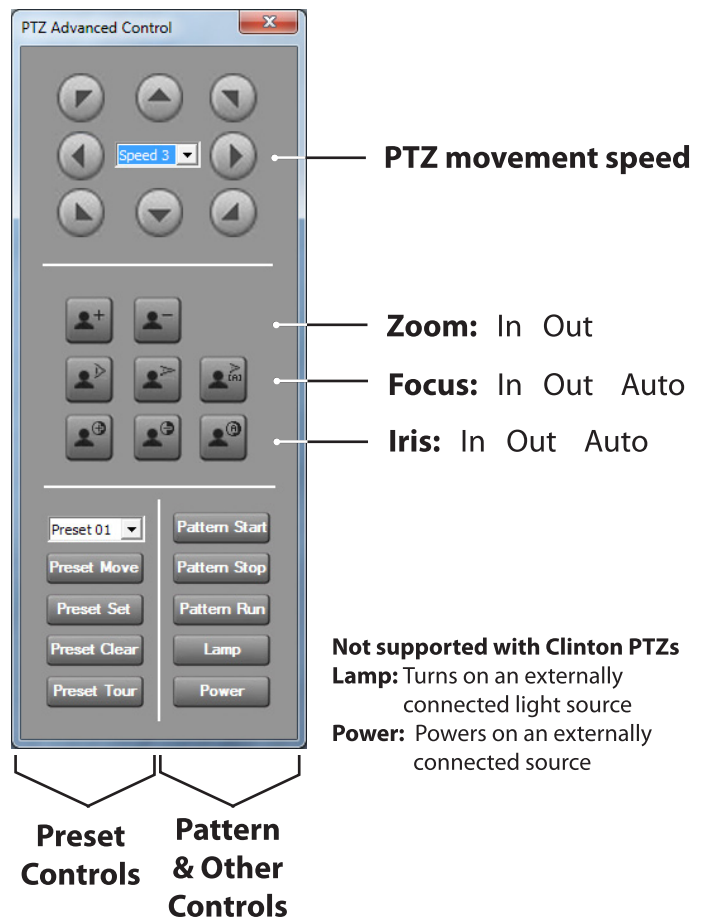


 **PTZ** -When the PTZ button is selected, you have basic pan-tilt-zoom control over a selected PTZ camera.



NOTE: PTZ camera controls must be configured in the DVR before software will control the camera.

Clicking the "Advance" button will bring up a pop-up advanced control window where you can control more advanced features.



Search Viewer Program

Use the Search Viewer program to access recorded content on your DVR. You can also use this to save recorded clips. It is recommended to only use this program to record or save clips that are smaller, and shorter. For longer clips (more than 5 minutes), use the Backup feature in the SMS program.

Date/Time Select When you initially connect to the DVR in Search Viewer the Select Date box will appear. Select a day and time you would like to begin searching from. If you select cancel, you can pull this box up again by clicking on the "Select Date" box located in the Recorded Content Viewer. (See Date Pop-Out Box below).

Select Month & Day: Blue color indicates available selections

Select Time: Move slide control to select. Blue color indicates schedule recording. Red color indicates motion or event recording.

■	Blue: Schedule Rec. Content
■	Red: Motion Rec. Content
■	Grey: No Recorded Content

Recorded Content Viewer Shows the currently selected date and time as well as content information for each camera. This window can only show 4 cameras at a time. Click on the up/down camera scrolling arrows to view other cameras. Use the "Select Date" button to pull up the Date/Time selection box again.

Currently Selected Date: 2012 / 08 / 08

Select Date Pop-Out Box: Select Date

Currently Selected Time: 10:18:00

Camera Channels: 13, 14, 15, 16

24-Hour Scale: 0 to 24

Time Selection Slider: 10:18:00

Camera Scrolling Arrows: Up/Down arrows

Search Viewer Overview




SCREEN AREA LEGEND


1. Camera Name (Can be Changed on DVR)
2. Playback Date & Time (This time will freeze if playback is slowed due to bandwidth)
3. Currently Selected Camera Window(s) (Blue Border)
4. DVR Name
5. Version Number
6. Live Viewer Screen Toggle
7. SMS Screen Toggle
8. Window Minimize & Program Close (this will automatically log out of the dvr)
9. Program Name
10. Current Time & Date (Pulled from computer)
11. Configuration/Setup Panel
12. Window Configuration Controls & Record Control
13. Additional Control Panel (Playback, Adjust, Option)
14. Camera Footage View & Time Selector (see page 10 for more info)
15. Date Indicator, Select Date Popout Selector
16. "PB" = Play-Back, "LB" = Live Backup Footage

Search Viewer- Advanced Controls

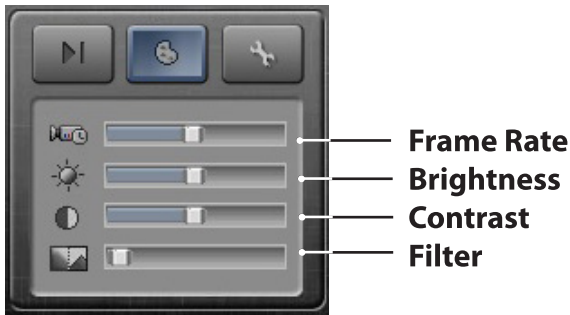
The advanced controls can be accessed by selecting the corresponding button in the lower right corner of the Live Viewer screen.


 **Play** When the play control button is selected, you can control the playback functions of the selected video frame. Including play, fast forward, reverse, pause, and skip controls.

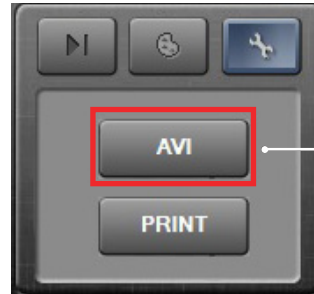


 **Adjust** When the adjust button is selected, you can change the parameters for each camera individually such as frame rate, brightness, contrast, and filter.

NOTE: This does not change the DVR settings, only how the picture appears when viewed in the software.



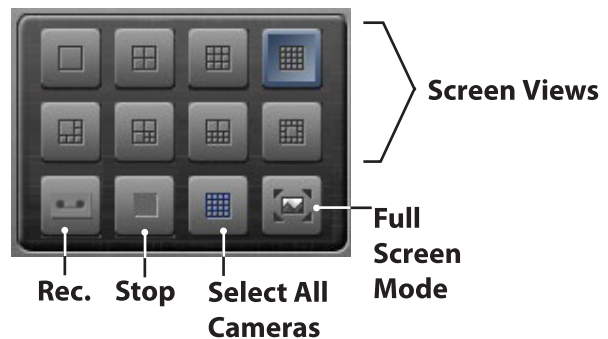
 **Option** When the option control is selected you have the ability to export a video segment as an .AVI file. You can also print a screenshot of the currently selected DVR frame.



NOTE: If you wish to save a clip as an AVI, you should do so in the DVR Player program.

Screen View & Recording Controls The various screen split-view layouts are shown.

The record button is used to save the clip you are watching to your computer. Press the stop button to end the recording.



Saving Footage

Pause / Play Indicator LB: Live Backup

Search Viewer






15:50:31
2012-08-09

Client Setup
Base Group
Building 4
Sales Floor

DVR My PC

Click the blue-line box to select all cameras simultaneously.

Saving a recording

1. Select the desired camera(s) you wish to record. These should be highlighted with a light-blue frame. Click the blue-line box  to select all frames at once.
2. If you have not done so already, navigate to the Select Date & Time controls in the bottom left corner of the Search Viewer window to set the date and time you would like to save.
3. Click the "Record"  button to begin the recording.
4. The playback must be started in order to record the video. Click the "Play"  button to begin the video. If the video is not playing, you will not save any footage.
5. When finished, click the "Stop"  button to stop the recording.
6. Click the "Pause"  button to pause the playback.
7. The recording will automatically be saved on your computer. Separate files will be saved for each camera that has been recorded.

Locating Footage

NOTE: The Search Viewer program can play clips, however for better playback performance with less lag/skip, files should be opened in the DVR Player program.

Locating Recorded Files

The file(s) can be found within the Search Viewer program by clicking on the "My PC" tab at the bottom of the Setup panel. To navigate to the files expand the following folders: "Backup" -> "Live" -> "Name of your DVR" -> "Date of recording" -> "h092545.001"

The video clip will be saved in the following format:

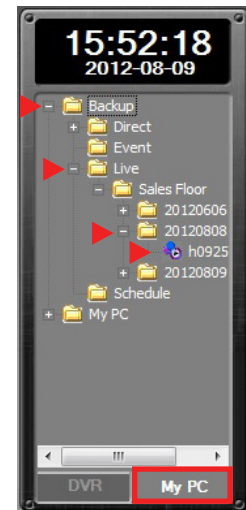
h09 25 45 .001
Hour Min. Sec. Cam#

The files can also be found on your local computer files by navigating as follows:

"Computer" -> "OS(C)" -> "SMS" -> "Backup" -> "Live" -> "Name of your DVR" -> "Date of recording" -> "h092545.001"

Note: You will also see a similar file beginning with the letter "i" example: "ih092545.001". This is a codec file, not the video file. If you wish to save the AVI file on recordable media for later playback, you must include both files.

Locating Recorded Files

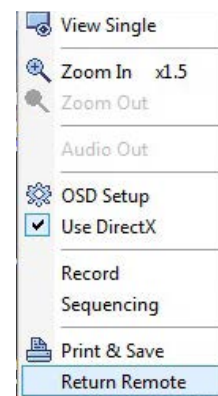


View Saved File

To view the clip in Search Viewer, double click the clip to place on the currently selected blue-frame window. Alternately, you can drag-and-drop the file onto any window. Use the Playback controls in the lower-right corner of the Search Viewer.

For better playback with less lag/skip, open the files in the DVR Player program.

To exit playback of a saved clip, and return to DVR footage, right-click in the camera image box and select "Return Remote".



DVR Player Overview

Use the DVR Player program to view recorded footage, and save recorded clips. It is recommended to use this program for all video playback for better performance.



SCREEN AREA LEGEND

1. DVR Player Window Number
2. "PB" = Play-Back, "LB" = Live Backup Footage
3. Playback Date & Time
4. Currently Selected Camera Window(s) (Blue Border)
5. Clip Name
6. Version Number
7. Window Minimize & Program Close
8. Program Name
9. Configuration/Setup Panel
10. Additional Control Panel (Playback, Adjust, Option)
11. Playback Controls

Locating Recorded Files


The file(s) can be found within the DVR Player program in the Configuration/Setup panel on the right-hand side of the DVR Player Window. To navigate to the files expand the following folders:
"Backup" -> "Live" -> "Name of your DVR" -> "Date of recording" -> "h092545.001"

Placing Recorded Files


To place a recorded file into the player window, you can double-click on the file name to automatically place into the blue-framed window. Alternately, you can drag-and-drop a file into any window you wish.

DVR Player- Advanced Controls

The advanced controls can be accessed by selecting the corresponding button in the lower right corner of the DVR Player screen.


 **Play** When the play control button is selected, you can choose from various screen views.



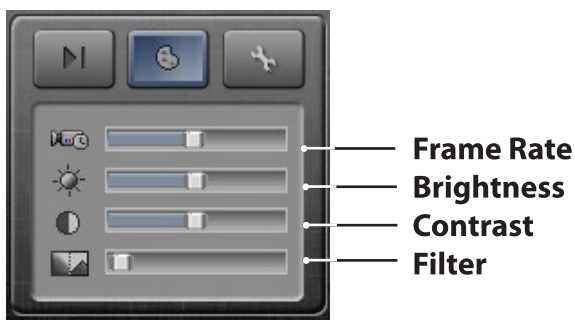
 **Option** When the option control is selected you have the ability to export a video segment as an .AVI file. (See next page for more info) You can also print a screenshot of the currently selected DVR frame.

NOTE: AVI will only save one camera per file. Bring a camera full-screen, or ensure the blue-frame is around the desired camera channel you wish to save as an AVI.



 **Adjust** When the adjust button is selected, you can change the parameters for each camera individually such as frame rate, brightness, contrast, and filter.

NOTE: This does not change the DVR settings, only how the picture appears when viewed in the software.



Saving AVI Clips

1. With your desired camera window selected, click the "Options" icon and click the "AVI" button.



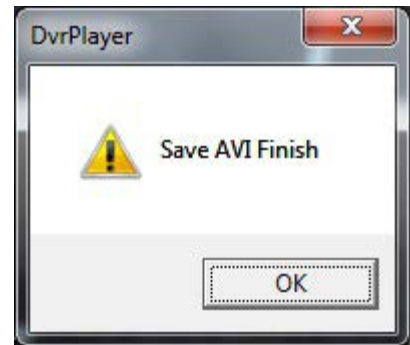
2. Drag the ends of the Clip Length bar to define the start and stop time. Click OSD to display Date/Time on file. Click Water mark to display WM. Click "Save AVI".

3. After your clip has been saved, you will see a completion message.

SCREEN AREA LEGEND

NOTE: Audio cannot be converted to AVI format.

1. OSD: Date & Time
2. Water Mark ("WM" cannot be customized)
3. Save Progress Bar
4. Clip Length Bar (Drag ends to select start & stop time)
5. Video Information Screen



You can also see the progress bar on the "Save AVI" screen has reached 100%.



4. Locating an AVI clip

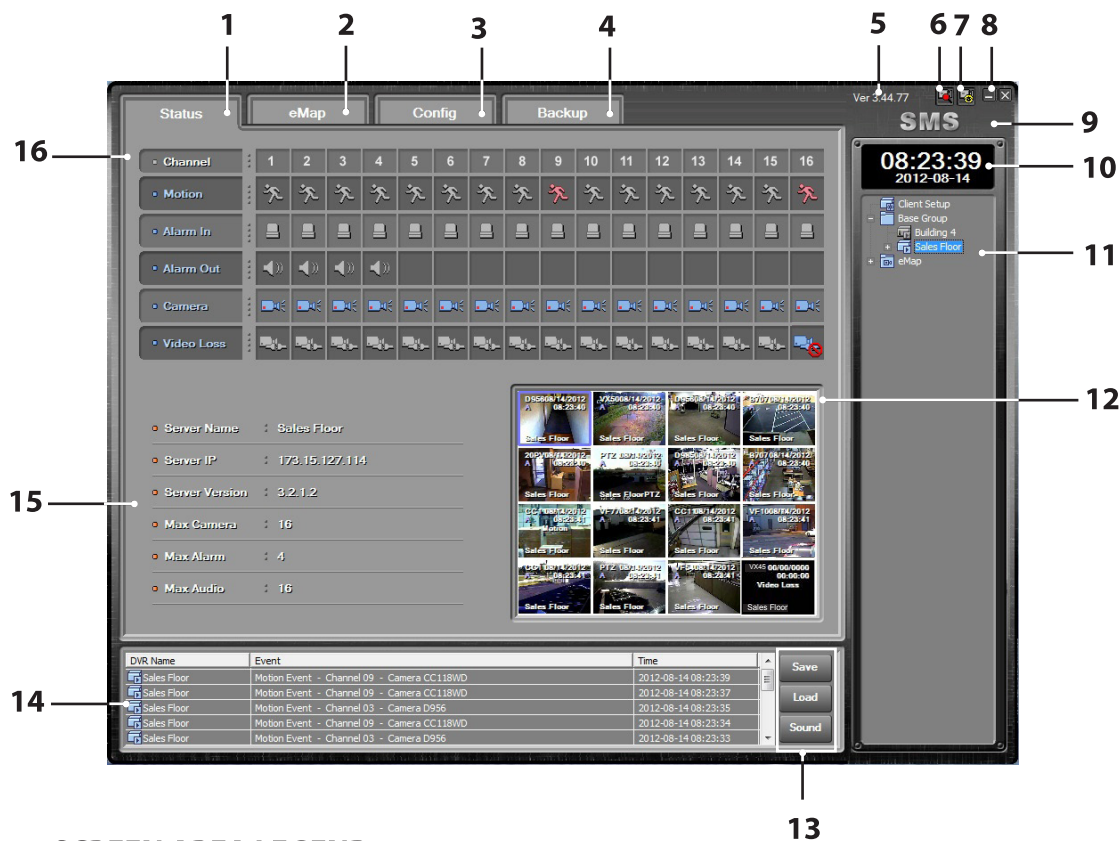
You can define where you would like to save AVI clips. The default location for AVI files can be found on your local computer files by navigating as follows:

"Computer" -> "OS(C)" -> "SMS" -> "Backup" -> "AVI" -> "20120813_102851.avi"

AVI Clip Format					
2012	08	13	_10	28	51
Year	Mo.	Day	Hour	Min.	Sec.

SMS Status Overview

Use the SMS Status screen to view the status of all cameras, alarms, motion, video loss on your DVR. This will also display your DVR name and parameters, as well as thumbnail views of live cameras.

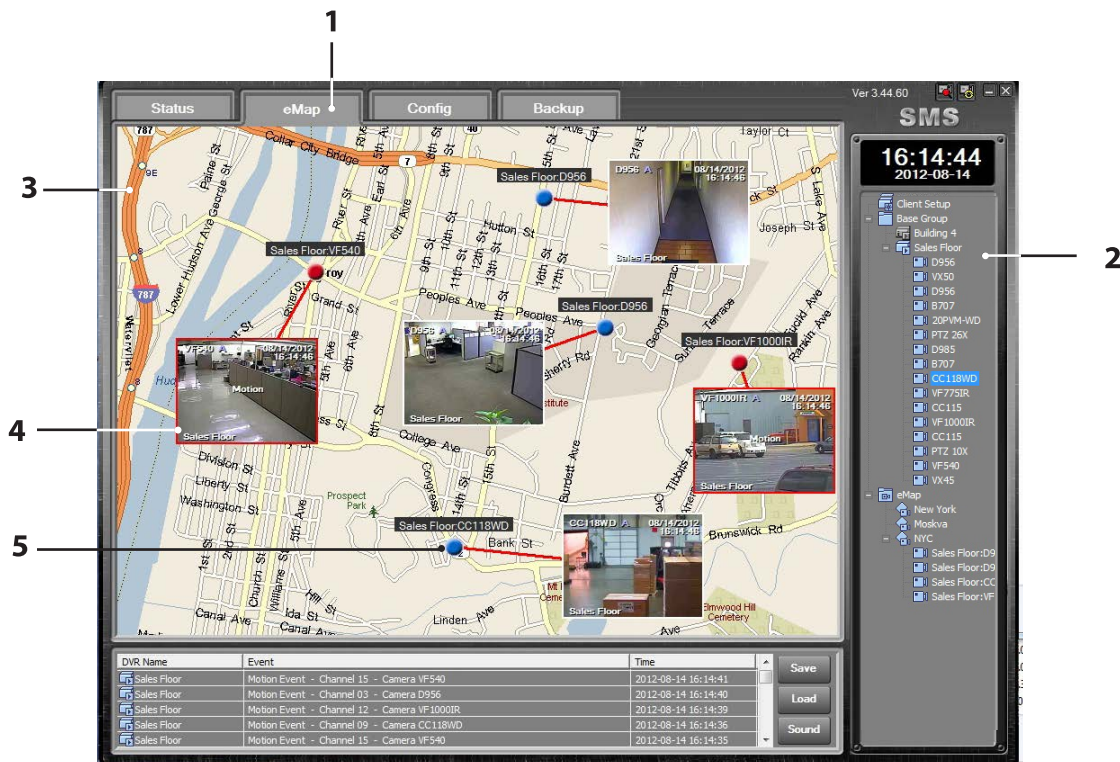


SCREEN AREA LEGEND

1. Status Tab
2. eMap Tab
3. Config Tab
4. Backup Tab
5. Version Number
6. Search Viewer Screen Toggle
7. Live Viewer Screen Toggle
8. Window Minimize & Program Close (this will automatically log out of the dvr)
9. Program Name
10. Current Time & Date (Pulled from computer)
11. Configuration/Setup Panel
12. Live View Panel
13. Save / Load Status, and Sound toggle (Enabling sound will play a chime every time an event is triggered)
14. List of Events
15. DVR Information
16. Channel Status

SMS eMap Overview

Use eMap to view camera status overlaid on an image file of your building floorplan, or area map.

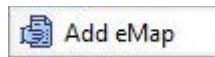


SCREEN AREA LEGEND

1. eMap Tab
2. Configuration/Setup Panel (Camera Selection Expanded)
3. .BMP image background
4. Red Motion Event Frame (with Red dot)
5. Camera Dot (click on dot to view camera image)

Adding your floorplan

Right-click on eMap to display "Add eMap". Click "Add eMap".



Name your eMap, and select the bitmap file (.bmp) on your computer.

Click on the newly created eMap name in the Configuration/Setup panel.

Adding Cameras to your floorplan

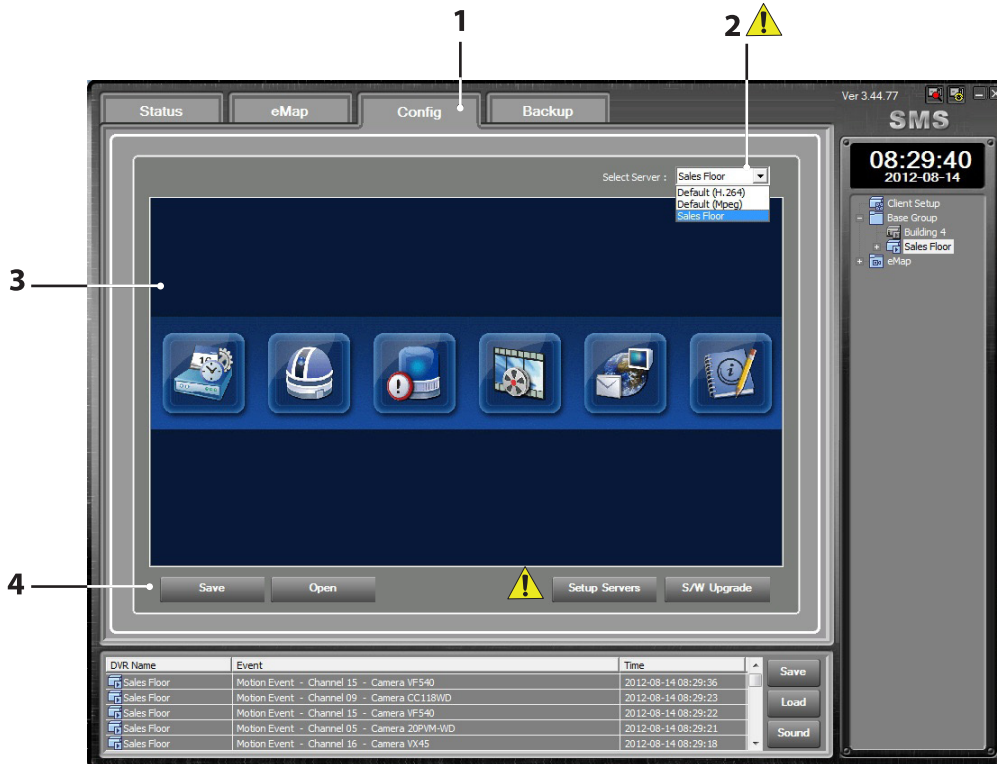
Expand the DVR camera list in the Configuration/Setup Panel. Drag & Drop cameras from the dropdown to the desired location on the eMap. Click on the colored dot to expand the camera thumbnail. Right-Click on a camera thumbnail to display menu for each camera.

Your DVR name as well as the camera name will appear over blue dots that indicate cameras.

Dots will turn red when motion is occurring on that camera.

SMS Config Overview

Use SMS Config to configure your DVR remotely, just as you would if you were on-site with the DVR.



SCREEN AREA LEGEND

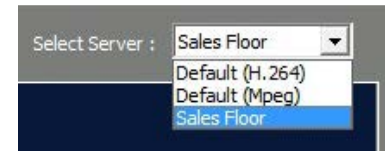
1. Config Tab
2. Selected Server Box
3. Remote DVR OSD (See DVR manual for operation)
4. Configuration & Software Upgrade Panel



Select your Server

Before making any changes in the DVR configuration panel, ensure that the correct DVR server is selected from the "Select Server" drop-down box. If this is left on "DEFAULT_SETUP" and changes are made, then you will no longer be able to control the DVR remotely. You will have to login to the DVR on-site.

Example



Apply the Configuration

When you have completed your changes to the DVR, you must load the changes to the DVR. To do this, select the "Setup Servers" button. (See next page for more information).



SMS Config Continued



Apply the Configuration

When you have completed your changes to the DVR, you must load the changes to the DVR. To do this, select the "Setup Servers" button.

Setup Servers

A dialog box titled "Password" with a close button (X) in the top right corner. It contains a text input field labeled "Password :". Below the input field are three buttons: "Change", "OK", and "Cancel".

You will be prompted to enter your password.
The default password is : 1234
Click "OK" to proceed

Select your DVR in the drop down menu.
Select the check box in the list on the right.
Select the "Config" button to proceed.

Click "Yes" to apply the configuration to your DVR

A dialog box titled "Remote Configuration" with a close button (X) in the top right corner. It contains the text "Remote Configuration to proceed." and two buttons: "Yes" and "No".

A screenshot of a software interface showing a tree view on the left and a table on the right. The tree view has a dropdown menu open showing "Base Group", "Building 4", "Sales Floor", and "Tech Demo". The table has the following data:

NETWORK	GROUP	DVR	IP_ADDRESS	
<input checked="" type="checkbox"/>	Accept	Base Group	Sales Floor	123.45.678.900

At the bottom of the interface are buttons for "Report", "Config", "DVR Check", and "Close".

Software Update

The latest SMS software updates are available on the Clinton Electronics website, on the support page. Your current software version can be found on the DVR under Setup -> System -> Version. Download the latest .ZIP software file to your computer. **DO NOT UNZIP THIS FILE.**

Click the "SW Update" button and locate the .ZIP file saved on your computer.

S/W Upgrade

A dialog box titled "Password" with a close button (X) in the top right corner. It contains a text input field labeled "Password :". Below the input field are three buttons: "Change", "OK", and "Cancel".

You will be prompted to enter your password.
The default password is : 1234
Click "OK" to proceed

Select your DVR in the drop down menu.
Select the "Upgrade" button to proceed.

Click "Yes" to apply the configuration to your DVR

A dialog box titled "Remote Configuration" with a close button (X) in the top right corner. It contains the text "Remote Configuration to proceed." and two buttons: "Yes" and "No".

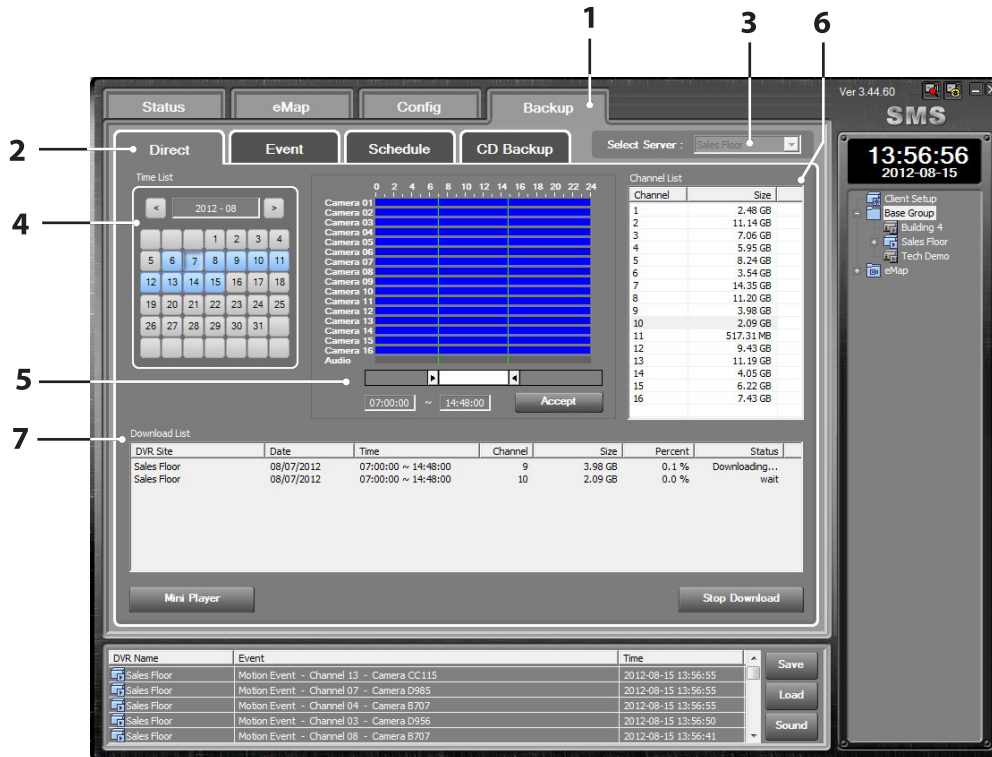
A screenshot of a software interface showing a tree view on the left and a table on the right. The tree view has a dropdown menu open showing "Base Group", "Building 4", "Sales Floor", and "Tech Demo". The table has the following data:

GROUP	DVR	IP_ADDRESS
Base Group	Sales Floor	123.45.678.900

At the bottom of the interface are buttons for "Report", "Upgrade", "DVR Check", and "Close".

SMS Direct Backup Overview

Direct Backup should be used when you wish to backup multiple cameras, or backup longer duration clips. Backing up files will slow your network connection, and will take approximately 1/2 that of the real time to complete. **Example:** If you wish to backup 16 channels for 24 hours, backup will take 10-12 hours to complete. The backup will not run as a background task. The SMS window must be open to run the backup.

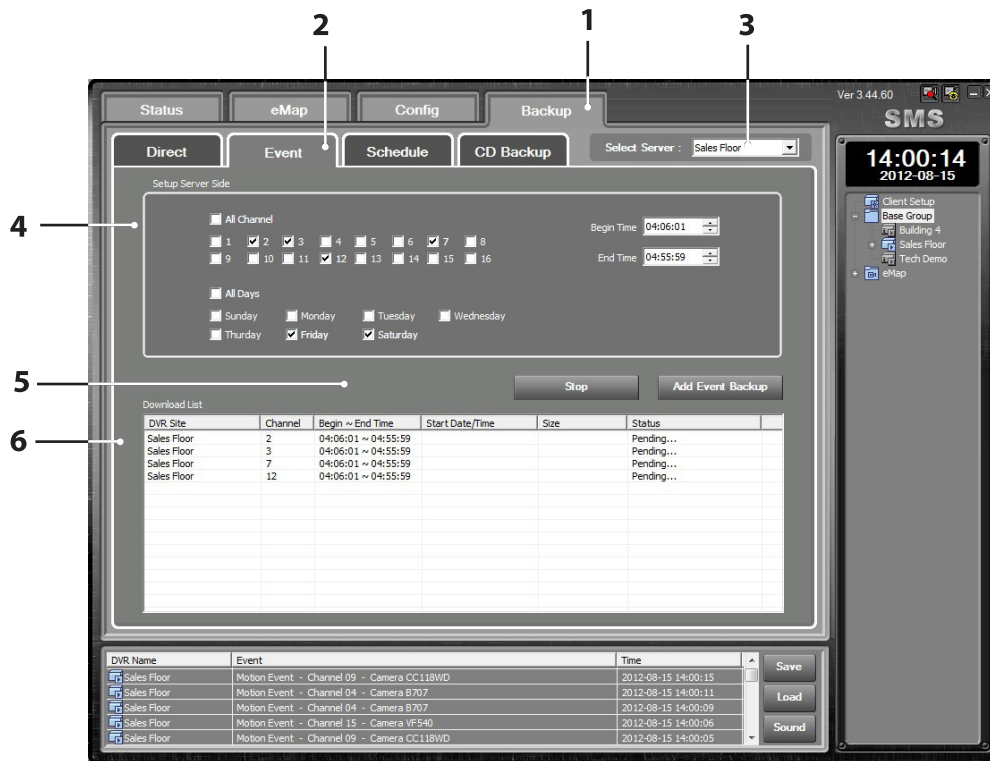


SCREEN AREA LEGEND/OPERATION

1. Backup Tab
2. Direct Backup Tab
3. Selected Server Box (Select the desired DVR)
4. Date Selection (Select the desired backup date. Dates in blue indicate available footage)
5. Time Slider (Move the ends of the slider to define the backup time. Click "Accept" to fill in the Channel List)
6. Channel Backup Selection List (double click on the clips you would like to backup)
7. Download List (This gives you the status of the backup. Click "Start Download" to begin the backup.)

SMS Event Backup Overview

Setup Event Backup if you wish to automatically backup motion, alarm, video loss events for the selected future days and times. This feature does not backup events that have previously occurred, only to set up backup settings for future events. Event Recording must be set up on your DVR in order to use this feature.

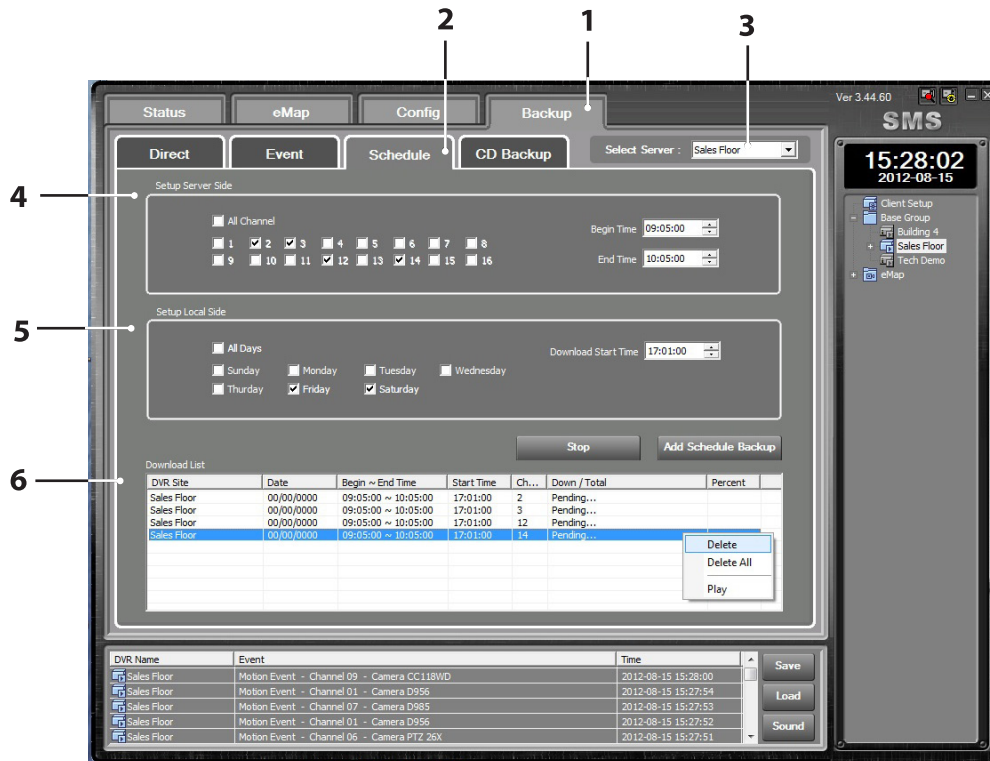


SCREEN AREA LEGEND/OPERATION

1. Backup Tab
2. Event Backup Tab
3. Selected Server Box (Select the desired DVR)
4. Setup Server Side (Select the desired camera channels, hours, and days of the week to monitor events.)
5. Add Event Backup (Click to add the parameters to the list. The "Start Date/Time", and "Size" will not show until the future day/time has been reached.) *Please note that file backup size can grow quite large if constant motion occurs.
6. Download List (Shows the status of the scheduled download clips. Right Click to display Delete/Play menu).

SMS Schedule Backup Overview

Use the Schedule Backup method to backup your clips at a more convenient time (such as non-working hours). Backing up files will slow your network connection, and will take approximately 1/2 that of the real time to complete. **Example:** If you wish to backup 16 channels for 24 hours, backup will take 10-12 hours to complete. The backup will not run as a background task. The SMS window must be open to run the backup.

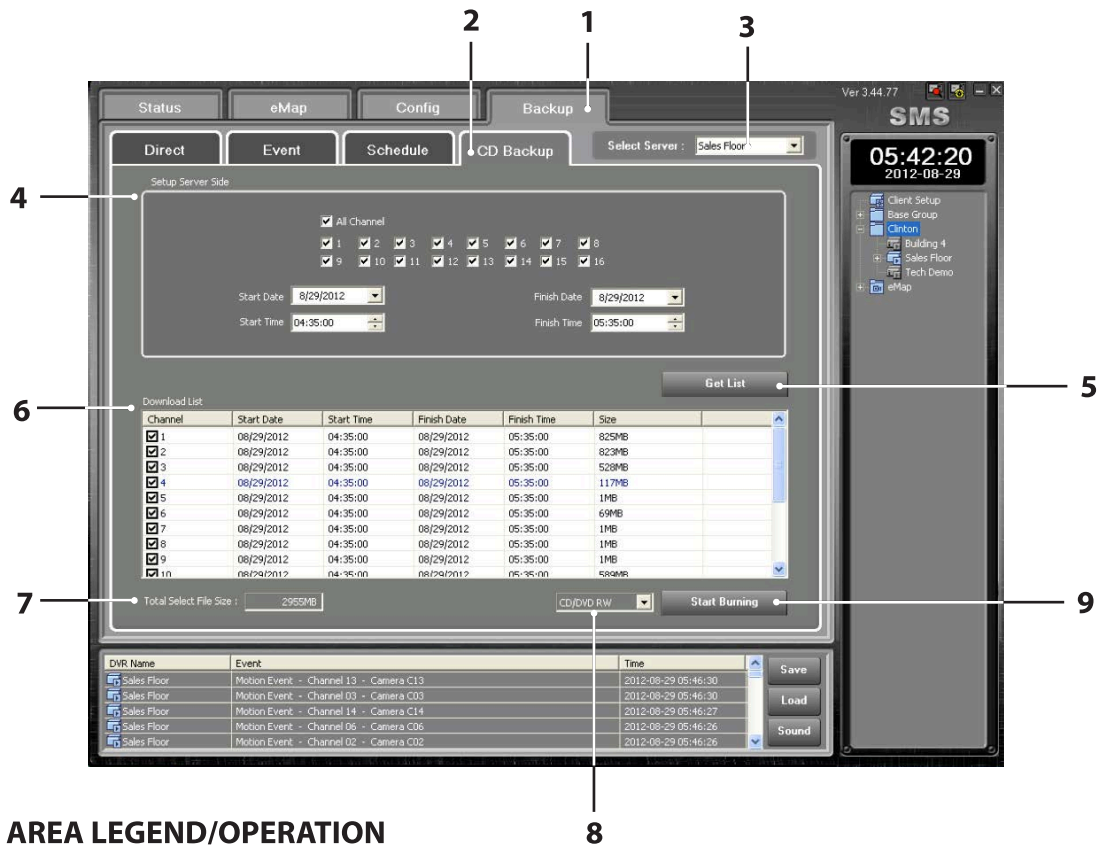


SCREEN AREA LEGEND/OPERATION

1. Backup Tab
2. Schedule Tab
3. Selected Server Box
4. Setup Server Side Box (Select the check boxes next to the desired cameras to backup. Select the time by highlighting the Hour, Min, Sec, and clicking the up/down arrows, or use your keyboard to enter the numbers.)
5. Setup Local Side Box (Select the days of the week you wish to backup. Select the time you wish to start the download. Click "Add Schedule Backup" to add the parameters to the Download List.)
6. Download List (Shows the status of the scheduled download clips. Right Click to display Delete/Play menu).

SMS CD Backup Overview

Use the CD Backup method to backup your clips onto a CD, DVD, or USB drive inserted into the DVR. This can be useful to remotely backup files for someone. Note: Someone must be at the DVR end to insert recordable media into the DVR.



SCREEN AREA LEGEND/OPERATION

1. Backup Tab
2. CD Backup Tab
3. Selected Server Box
4. Setup Server Side Box (Select the checkboxes next to the desired cameras to backup. Select the time by highlighting the Hour, Min, Sec, and clicking the up/down arrows, or use your keyboard to enter the numbers.)
5. Get List (Click this to populate the Download List after you have entered the date and time parameters.)
6. Download List (Shows the status of the scheduled download clips.)
7. Total File Size (This is the total size of the files to be burned to the disc. Make sure this size is smaller than the size of your recordable media disc to avoid clips being cut short.)
8. Media Selection Box (Select your recordable media type from the drop down selection box. **NOTE: CD/DVDRW or USB must be inserted to see this selection box.**)
9. Start Burning (Click this button to start the backup.)



CLINTON Electronics

CLINTON Electronics

CLINTON Electronics
6701 Clinton Road
Loves Park, IL 61111

1.800.447.3306 **Sales**
1.800.549.6393 **Support**
1.800.633.8712 **Fax**

www.clintonelectronics.com

v.09.14.12